

# LOVOL

MAKE WORLD BETTER



Engine	WEICHAI LOVOL
Rated Power	36.8kW
Bucket Capacity	0.23 m <sup>3</sup>
Operation Weight	5730kg

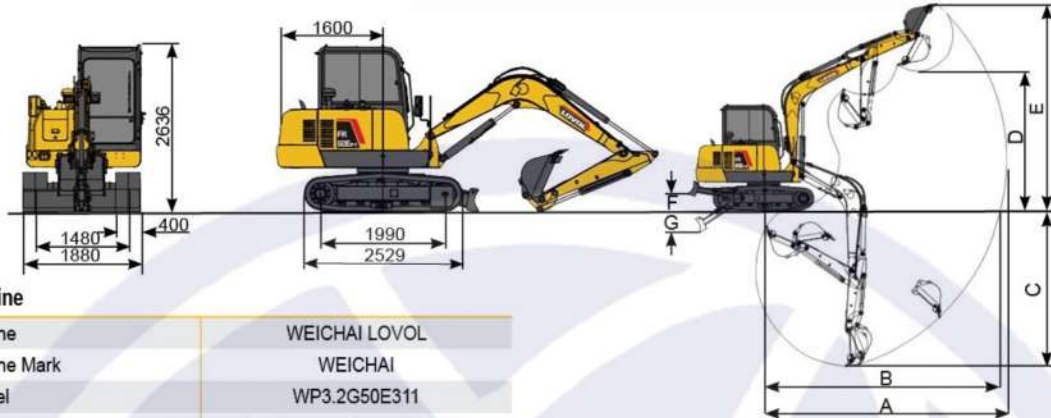
Model  
**FR60E2-H**  
HYDRAULIC EXCAVATOR



**PT. HASTA KARYA ANANTA**  
SALES - RENTAL - SERVICE - SPAREPART - TRADE IN

### FR 60E2-H

### LOVOL CONSTRUCTION MACHINERY GROUP



#### Engine

Engine	WEICHAI LOVOL
Engine Mark	WEICHAI
Model	WP3.2G50E311
Engine Type	Diesel Engine, 4 Stroke, Water Cooled
Number of Cylinder-Bore×Stroke	4-98×105mm
Engine Power / Speed	36.8kW / 2200rpm
Engine Torque / Speed	200N·m / 1400-1700rpm
Displacement	3.17L
Fuel Tank Capacity	110L

- In heavy duty working applications, the main computer controller automatically adjusts power and speed according to the change of the load to ensure high output power, so as to the efficiency will be improved significantly

#### Walking drive

Type	Hydrostatic		
Travel Speed (Max. / Min)	4.2km/h / 2.4km/h	4.5km/h / 2.5km/h	4.8km/h / 2.6km/h
Max. Traction Force	49.4kN	46.5kN	44kN
Gradeability	35°		
Upper Roller / Lower Roller (each side)	1 / 5		
Ground Pressure	32.33kPa		
Track Type	Triple grouser		
Track Width	400mm	500mm	
Track Length	2529mm		
Track Gauge	1480mm		

- The track can be adjustable of tension.
- The left and right track driving independently.

#### Hydraulic System

Hydraulic Flow	159L/min
Hydraulic Pressure	24.5MPa

- Hydraulic safety lock
- The system will automatically detect the pressure when face big frustration during digging, and automatically adjusts output pressure to keep the powerful force in digging process

#### Electrical System

Electric system	12V
Battery	12V 100Ah × 1 units

#### Working Performance

Bucket Type	Standard Bucket With Teeth And Side Cutter		
Bucket Capacity	0.23m <sup>3</sup>		
Bucket Width	650mm		
Bucket Digging Force	50kN		
Arm Digging Force	31kN		
360° Swing Speed	11r/min		
Blade Dozer	1930mm × 340 mm		
Blade Dozer Lifting Height (F)	400mm	440mm	
Blade Dozer Falling Height (G)	500mm	450mm	
Arm Type	5m	6m	7m
Max. Digging Radius (A)	6000mm	6450mm	7100mm
Max. Digging Radius On Ground Level (B)	5850mm	6250mm	6900mm
Max. Digging Depth (C)	3650mm	4220mm	4650mm
Max. Unloading Height (D)	3480mm	4370mm	4670mm
Max. Digging Height (E)	5300mm	5650mm	5950mm

#### Cab

- All weather steel cap with safety glass, ROPS/FOPS cab, safe work, air condition
- Adjustable seat with safety belt is very comfortable
- Wipers, radio
- LCD Display screen: 2 modes (bucket mode, breaker mode) hour meter, voltage charger, water-cooling temperature, engine oil pressure, hydraulic oil pressure, fuel level, etc., and add trouble code diagnostic and maintenance monitor functions which are convenient for operator to find the failure and do the routine maintenance on time

#### Optional Configuration

- Hydraulic breaker
- Quick coupler
- Rubber track pad
- Rubber track
- Flail Head
- GPS system on computer, smartphone (android, IOS)

LOVOL CONSTRUCTION MACHINERY GROUP CO.,LTD.

Address: No.75, Huanghe East Road, Huangdao District, Qingdao City, Shandong Province, China.

As manufacturer, LOVOL has right to constantly upgrade and improve our products without informing to customers. The pictures in illustrators are for reference only, the detailed specifications are subject to real products.

