



K-Series
MOBILE ELEVATING WORK PLATFORM

XGA20ACK
XGA20ACK-Li



PT. HASTA KARYA ANANTA

SALES - RENTAL - SERVICE - SPAREPART - TRADE IN



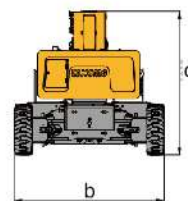
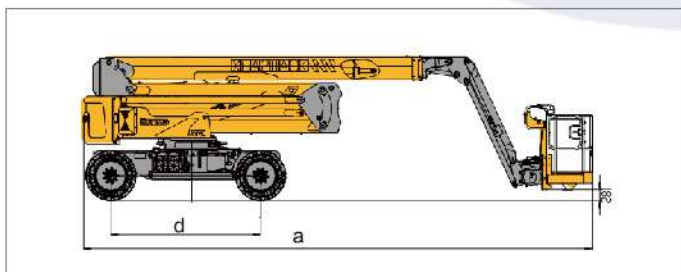
www.lifterindo.com

Parameter

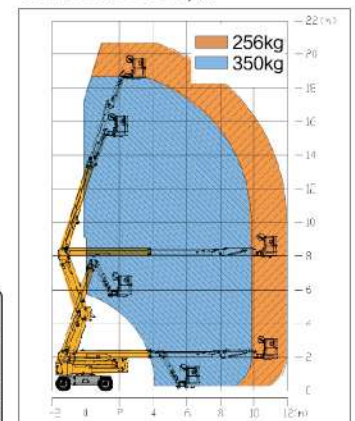
Item	Unit	XGA20ACK	XGA20ACK-Li
Dimension			
a.Overall length(stowed)	mm		8490
Overall length(transportation)	mm		8490
b.Overall width	mm		2490
c.Overall height	mm		2380
Platform dimension	mm	1830 × 760 × 1150	
d.Wheelbase	mm		2500
Max. working height	mm		20600
Max. platform height	mm		18600
Max. working range	mm		11980
Performance			
Max.load capacity	kg	256 (Unrestricted) / 350 (Restricted)	
Travel speed (stowed)	km/h		4.8
Travel speed (elevated/extended)	km/h		0.6
Primary boom luffing range	°		0~72
Telescopic boom luffing range	°		0~73
Jib luffing range	°		/
Turntable rotation angle	°		360 continuous
Tailswing	mm		560
Platform rotation angle	°		160
Min.turning radius(outside)	mm		5000
Min.turning radius(inside)	mm		3500
Total weight	kg		9100
Max.gradeability (counterweight upwards)	%		30
Max.gradeability (counterweight downwards)	%		45
Power source			
Battery	Ah/V	(390~420) / 48 DC (Standard)	(400~420) / 48 Lithium battery(Options)
Power unit	Kw/V	12 / 32 AC	12 / 32 AC
Auxiliary power unit	Kw/V	2.3 / 12 DC	2.3 / 12 DC
Travel motor	Kw/V	3.3 / 32 AC	3.3 / 32 AC

Options

Tool tray / Working light



Work Curve Graph



E-mail: rizky@hka.co.id
Hotline: +62 813 8335 4828

