



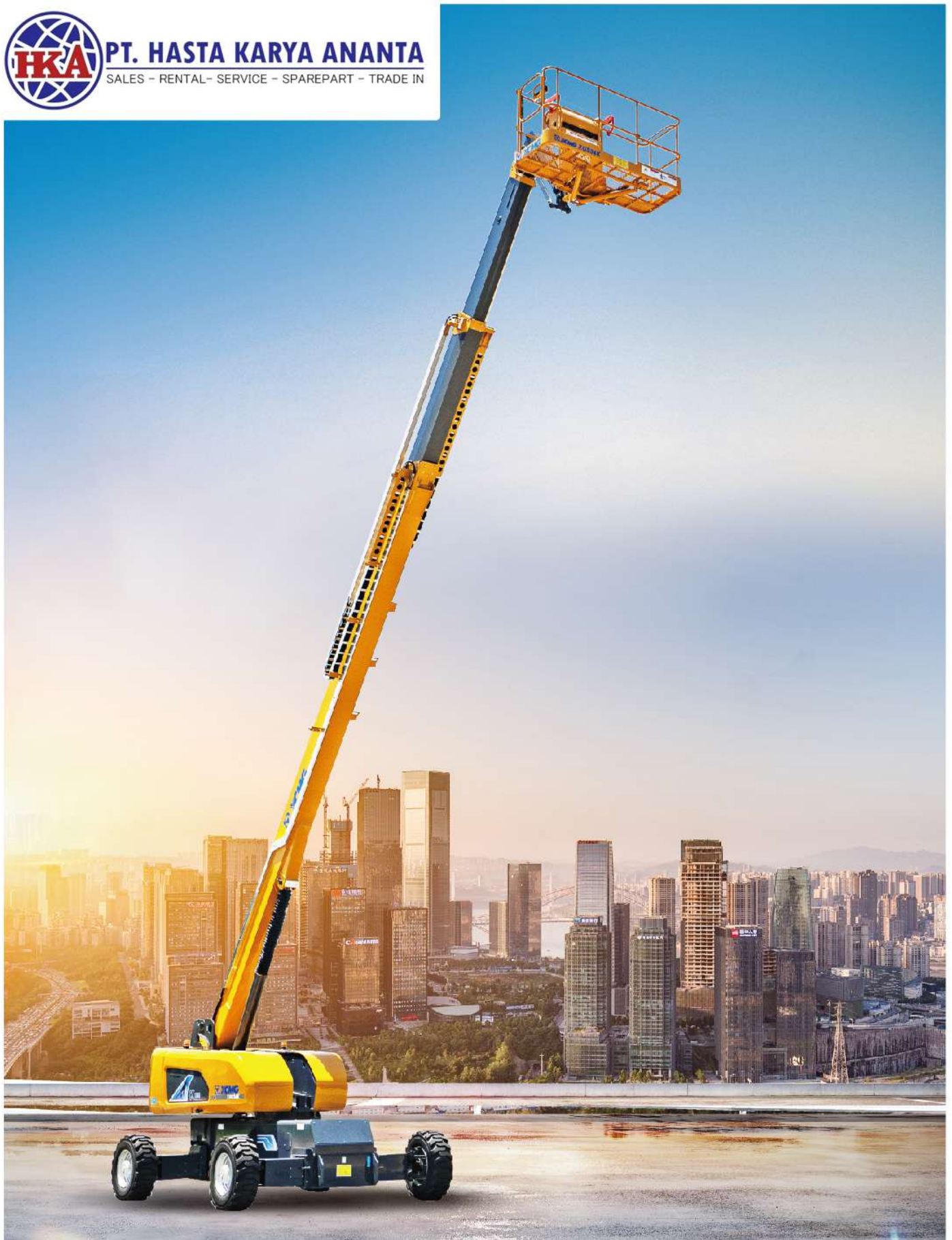
K-Series  
MOBILE ELEVATING WORK PLATFORM

# XGS34K



**PT. HASTA KARYA ANANTA**

SALES - RENTAL - SERVICE - SPAREPART - TRADE IN



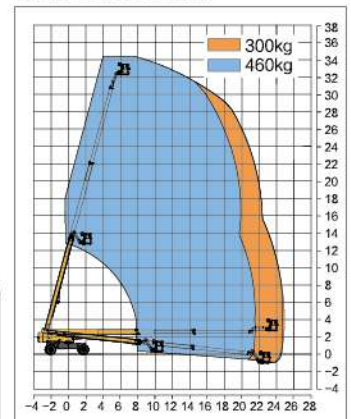
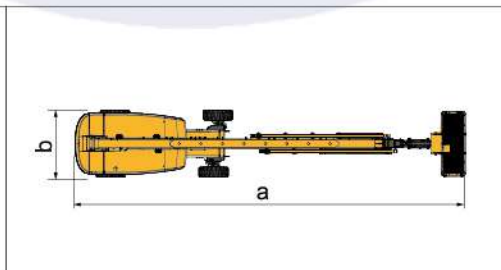
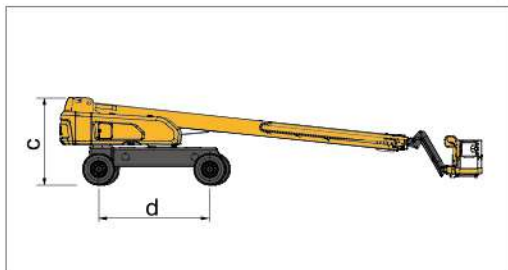
## Parameter

Item	Unit	XGS34K
<b>Dimension</b>		
a. Overall length (stowed)	mm	14400
Overall length (transportation)	mm	12700
b. Overall width	mm	2490 ( Shaft retracted ) / 3800 ( Shaft extended )
c. Overall height	mm	3000
Platform dimension	mm	2400 × 900 × 1150
d. Wheelbase	mm	3800
Max. working height	mm	34300
Max. platform height	mm	32300
Max. working range	mm	24700
<b>Performance</b>		
Max. load capacity	kg	300 ( Unrestricted ) / 460 ( Restricted )
Walking speed (stowed)	km/h	5
Walking speed (elevated/extended)	km/h	0.6
Boom luffing range	°	-6~ 75
Rotation angle of turntable	°	360 continuous
Tailswing	mm	2085 ( Shaft retracted ) / 1430 ( Shaft extended )
Rotation angle of platform	°	160
Min. turning radius (outside)	mm	6800 ( Axle retracted ) / 5800 ( Axle extended )
Min. turning radius (inside)	mm	4400 ( Axle retracted ) / 2400 ( Axle extended )
Overall weight	kg	19300
Max. gradeability (counterweight upwards)	%	45
Max. gradeability (counterweight downwards)	%	45
<b>Power source</b>		
Engine model	/	Cummins QSF2.8/ Yuchai YC4FA75-T300/ Yuchai YCF3075-T480
Rated power	kW	53 / 55 / 55.8
Hydraulic tank capacity	L	260
Hydraulic system capacity	L	520
Fuel tank capacity	L	200

## Options

Anti extrusion device / Tool tray / Working light / Anti-squeeze hand-assisted track of the platform  
Half-height mesh platform / Aircraft protection device / Anti-falling assembly

Work Curve Graph



E-mail: [rizky@hka.co.id](mailto:rizky@hka.co.id)  
Hotline: +62 813 8335 4828

