



灵云 SMART CLOUD
K系列移动式升降工作平台
MOBILE ELEVATING WORK PLATFORM

XGS43



PT. HASTA KARYA ANANTA
SALES - RENTAL - SERVICE - SPAREPART - TRADE IN

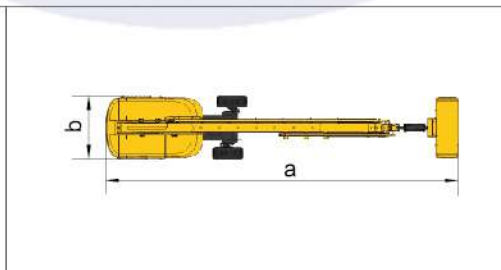
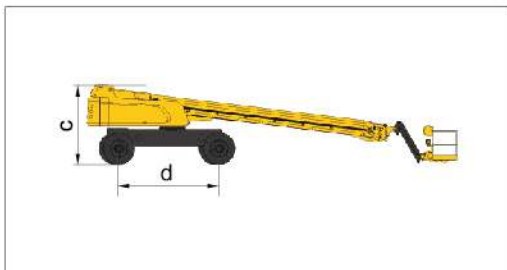
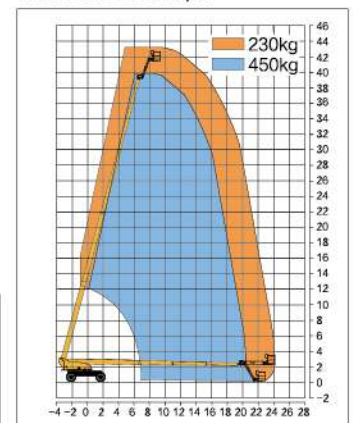


Parameter

Item	Unit	XGS43
Dimension		
a. Overall length (stowed)	mm	14900
Overall length (transportation)	mm	12000
b. Overall width	mm	2490 (Shaft retracted) / 3800 (Shaft extended)
c. Overall height	mm	3050
Platform dimension	mm	2400 × 900 × 1150
d. Wheelbase	mm	3800
Max. working height	mm	43300
Max. platform height	mm	41300
Max. working range	mm	25000
Performance		
Max. load capacity	kg	230(Unrestricted) / 450(Restricted)
Walking speed (stowed)	km/h	5
Walking speed (elevated/extended)	km/h	1
Boom luffing range	°	-1~75
Rotation angle of turntable	°	360 continuous
Tailswing	mm	2390 (Shaft retracted) / 1725 (Shaft extended)
Rotation angle of platform	°	160
Min. turning radius (outside)	mm	6800 (Axle retracted) / 5800 (Axle extended)
Min. turning radius (inside)	mm	4400 (Axle retracted) / 2400 (Axle extended)
Overall weight	kg	22000
Max. gradeability (counterweight upwards)	%	40
Max. gradeability (counterweight downwards)	%	30
Power source		
Engine model	/	Cummins QSF2.8t3TC71/Yuchai YC4FA75-T300/Yuchai YCF3075-T480
Rated power	kW	53 / 55 / 55.8
Hydraulic tank capacity	L	260
Hydraulic system capacity	L	400
Fuel tank capacity	L	180

Options

Anti extrusion device / Tool tray / Working light / Anti-squeeze hand-assisted track of the platform
 Half-height mesh platform / Aircraft protection device / Anti-falling assembly


Work Curve Graph


E-mail: rizky@hka.co.id
Hotline: +62 813 8335 4828

