



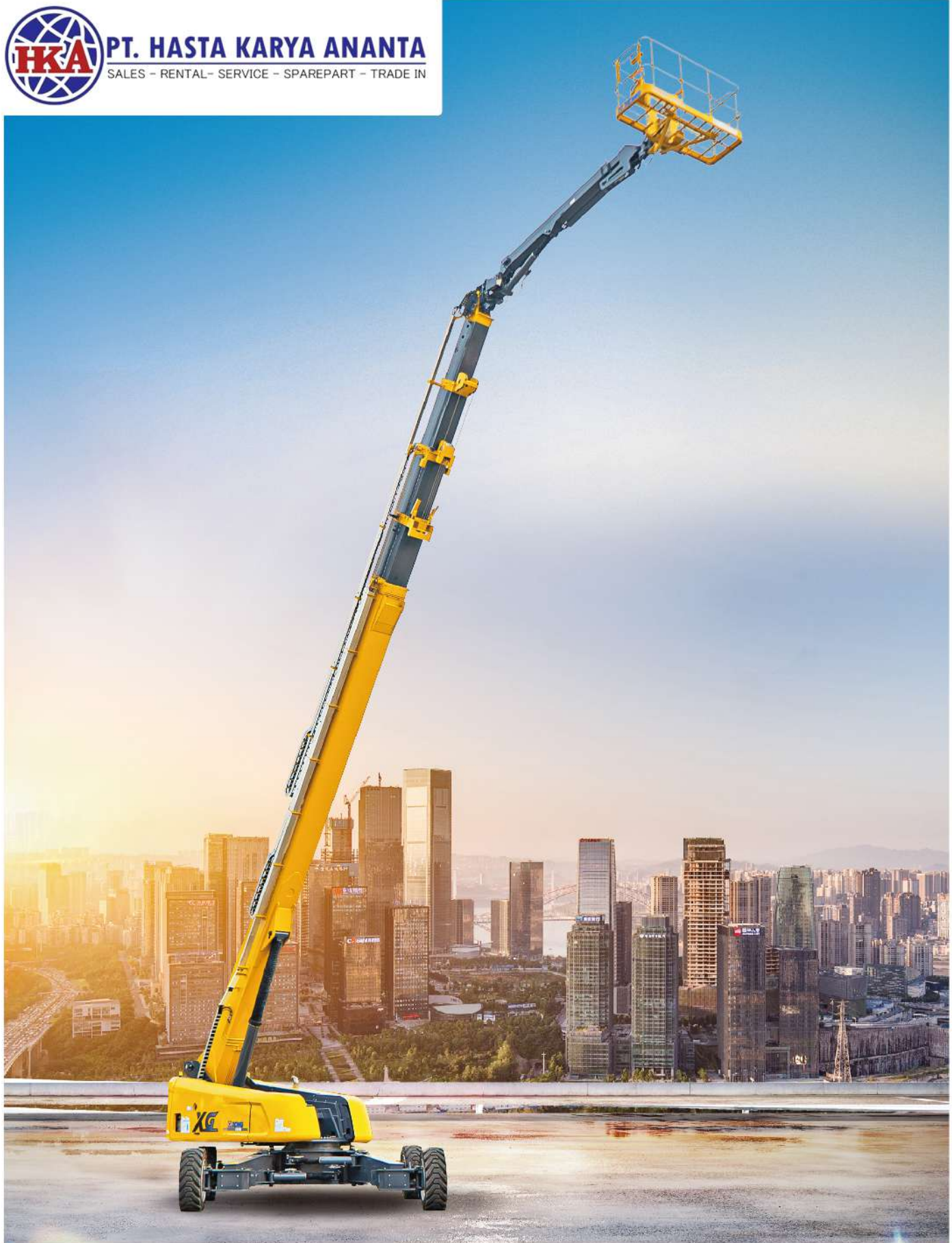
MOBILE ELEVATING WORK PLATFORM

**XGS58 XGS58K**



**PT. HASTA KARYA ANANTA**

SALES - RENTAL - SERVICE - SPAREPART - TRADE IN



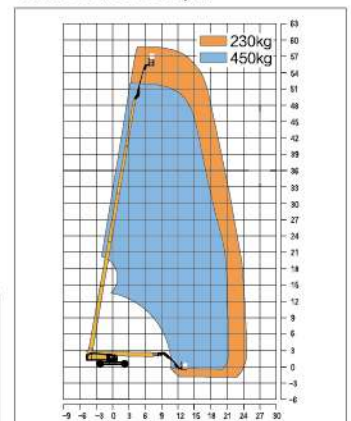
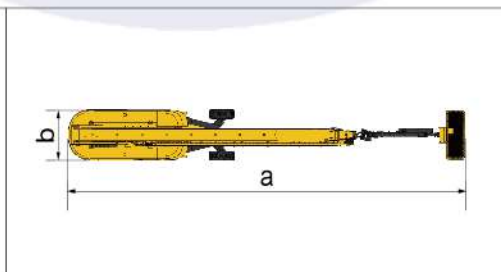
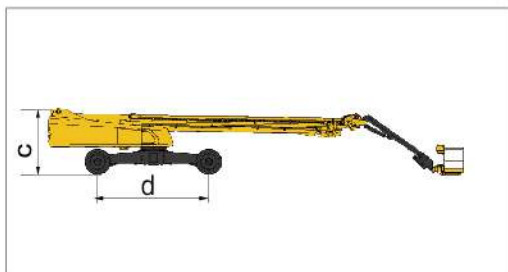
[www.lifterindo.com](http://www.lifterindo.com)

**Parameter**

Item	Unit	XGS58/XGS58K	
<b>Dimension</b>			
a. Overall length (stowed)	mm	19450	
Overall length (transportation)	mm	14600	
b. Overall width	mm	2490 ( Shaft retracted ) / 5030 ( Shaft extended )	
c. Overall height	mm	3070	
Platform dimension	mm	2400 × 900 × 1150	
d. Wheelbase	mm	5220 ( Shaft retracted ) / 4590 ( Shaft extended )	
Max. working height	mm	58.6	
Max. platform height	mm	56.6	
Max. working range	mm	24.4	
<b>Performance</b>			
Max. load capacity	kg	230(Unrestricted) / 450(Restricted)	
Walking speed (stowed)	km/h	4.5	
Walking speed (elevated/extended)	km/h	0.3~0.5	
Boom luffing range	°	-1~80 / -45~ 75	
Rotation angle of turntable	°	360 continuous	
Tailswing	mm	2320	
Rotation angle of platform	°	160	
Min. turning radius (outside)	mm	9500 ( Axle retracted ) / 6600 ( Axle extended )	
Min. turning radius (inside)	mm	7600 ( Axle retracted ) / 2800 ( Axle extended )	
Overall weight	kg	27900	
Max. gradeability (counterweight upwards)	%	45	
Max. gradeability (counterweight downwards)	%	30	
<b>Power source</b>			
Engine model	/	Duetz TD 3.6 L4	Yuchai YCF30100-T481
Rated power	kW	74.4	
Hydraulic tank capacity	L	250	
Hydraulic system capacity	L	430	
Fuel tank capacity	L	200	

**Options**

Anti extrusion device / Tool tray / Working light / Anti-squeeze hand-assisted track of the platform  
 Half-height mesh platform / Aircraft protection device / Anti-falling assembly

**Work Curve Graph**


**E-mail: rizky@hka.co.id**  
**Hotline: +62 813 8335 4828**

